

Ballsaal-Studio Berlin
Sabine Atzberger-Göbel

Wriezener Str. 6 - 13359 Berlin

cell +49(0)172 - 323 66 22

phone +49(0)30 - 400 49 800

fax +49(0)30 - 400 49 808

email info@ballsaal-studio.com

web www.ballsaal-studio.com

Fine Arts

"first-class location"
... in the middle of cosmopolitan Berlin

The ballroom is a location with great assets: unique in daylight and brilliantly original.

A photogenic ambiance, the greenish-grey walls change between glory and decadence, between classic harmony of the social elite and gentrified urban wickedness.

A place of creativity. The ballroom is powerful.

Musik Video

The Ballroom Studio may be rented for photo, film, video shooting and advertising photography.

Product Presentation

TV Commercial

Fine Arts



NOTE

Ballroom

130 m² (18 m x 7.50 m x 5.20 m),
ground floor level
Hard wood plank flooring
Lighting with dimmer switches
Thermostat-controlled heating
Air condition
Sound insulation windows
concert quality piano

Adjoining rooms

Foyer 70 m², basement 75 m², office 20 m²,
kitchen 15 m² with high voltage power supply 32A CEE35
Winter garden 33 m² with kitchenette
4 guest bathrooms
Total space 340 m²
Patio and garden: limited use only

Technical data

High voltage power supply: 2 x 32 A CEE 35 A in the studio
Modern electrical wiring with several circuits
Compact music system for CD, iPod, and MP3 player
Beamer 2,2 AL, 800 x 600 SVGA
Internet access: WLAN

Service

Espresso
Foosball table
Drinks and snacks on request

General terms

Location rental agreement
Rates are calculated on the basis of the production rental period as well
as time and effort
Power supply included up to 100 kWh
Final cleaning by arrangement

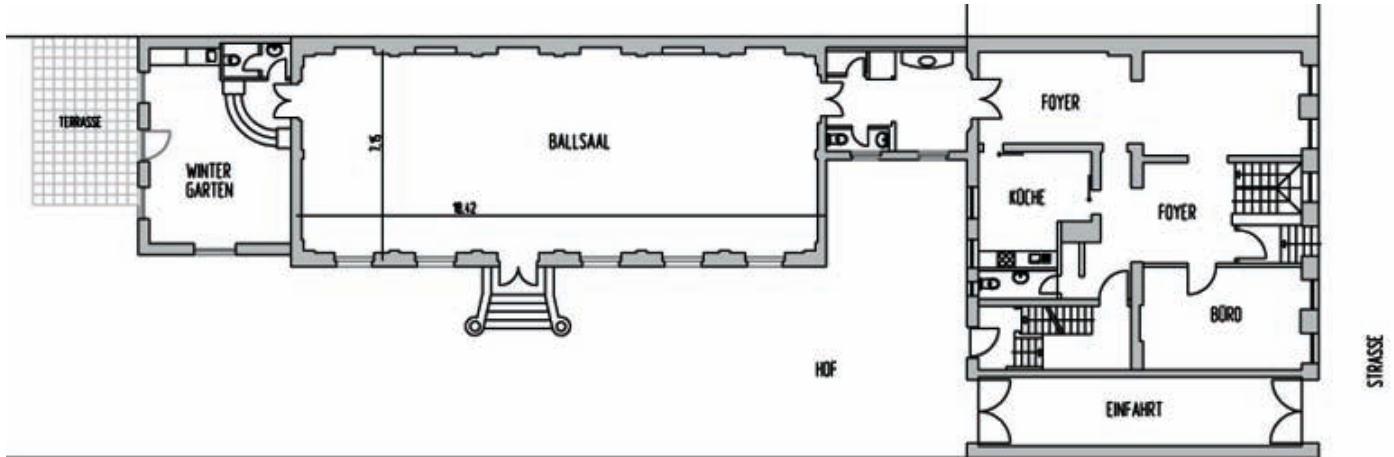
You name it – we do it.

Orchestra Rehearsal

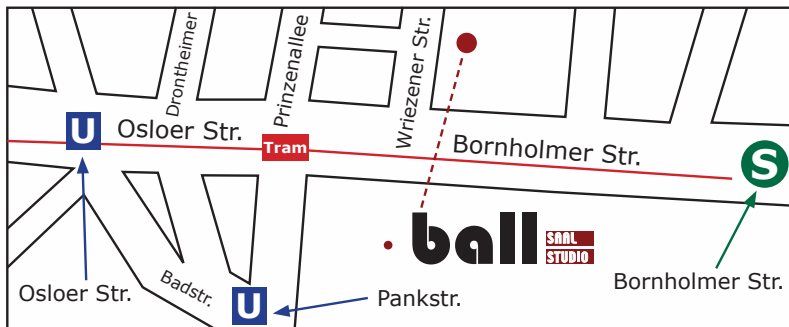
Fine arts



Floor plan Ballroom Studio



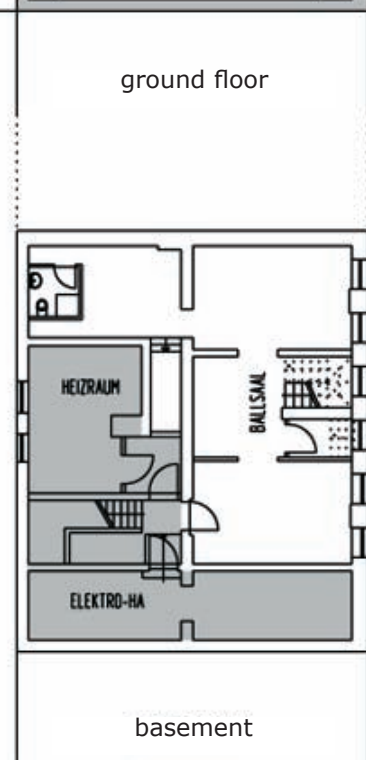
Floor plan Ballroom Studio



Wriezener Str. 6, **13359 Berlin**

Wriezener Straße is at walking distance (10 minutes) from the train station "Bornholmer Straße".
Bornholmer Straße (Prenzlauer Berg) becomes Osloer Straße (Berlin West, Mitte) at train station "Bornholmer Straße". Go on from there and take the third street on your right (one before Prinzenallee), Wriezener Straße No. 6 is on your right.

- S-Bahn "Bornholmer Straße" S1 S2 S25 S8 S85
- "Osloer Straße" U8 U9
- "Pankstraße" U8
- "Prinzenallee" Tram 50 Tram M13



basement

Photo Shooting